

FUEL CONSUMPTION MONITORING SYSTEM



Relevant Information about Fuel Consumption and Key Operation Parameters

VEP- 01 Fuel Consumption Monitoring System is state of the art **OFF- LINE** intelligent electronic system, which provides with detailed information of fuel consumption, speed, route distance, motor hours, idle time and other key operation parameters of the truck, OTR, motor vehicle, coach, bus, tractor, construction, farming machines, diesel - generator, heavy equipment ,heaters, drilling rigs or other mobile or static objects, powered by internal combustion engines used liquid fuel like diesel oil, gasoline, kerosene.

AutoCheck™ software process and stores information about the all vehicles, machines for the whole operation period. The user may get reports for any time interval:

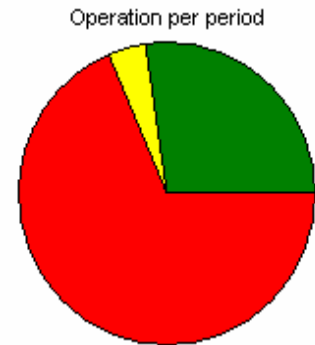
- Fuel consumption
- List of refuels and tank draining with indication of amount and time.
- Speed and route distance within period of time.
- Monograms of motor vehicle operation and many other features provided by software.

View your vehicle operation data & fuel consumption

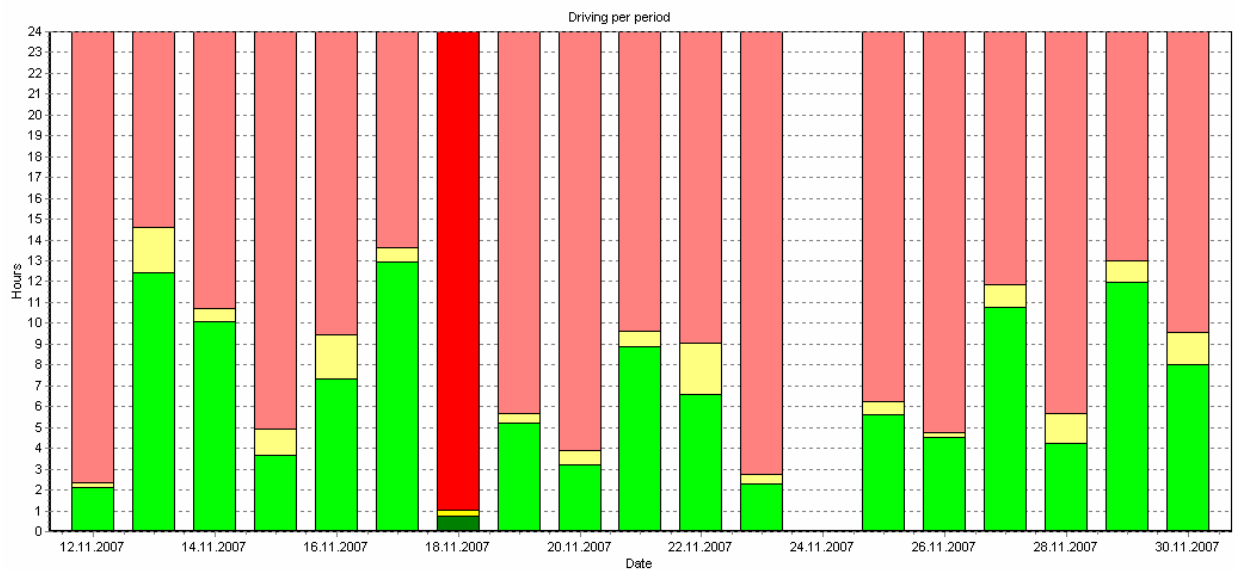


EFFECIENCY QUICK LOOK

■ Drive 120 h. 40 min. - 27,4%
■ Idle 18 h. 04 min. - 4,1%
■ Stand time 302 h. 01 min. - 68,5%



Daily operation chart: DRIVE TIME - IDLE TIME



PRREVENT FUEL THEFT - CHECK FUEL INVOICES

Time			
Start of period	12.11.2007 12:08:00		
Finish of period	30.11.2007 21:12:00		
Engine operation time	138 h. 46 min.		
Driving time	120 h. 40 min.		
Distance and speed			
Distance	8042,5 km		
Average speed	66,7 km/h		
Maximum speed	103 km/h		
Fuel oil			
Initial volume	191,4 L		
Final volume	373,3 L		
Minimum volume	13,6 L		
Maximum volume	471,0 L		
Refuels volume	2913,4 L		
Drainings volume	10,2 L		
Consumption	2721,2 L		
Consumption per 100 km.	33,8 L		
Consumption per motohour	19,6 L		
Consumption per 100 km. driving	32,4 L		
Mileage per 1 litre	2,96 km		

LIST OF REFUELS AND FUEL WITHDROWLS

[-] Refuels and drainings			
Refuel/drain	Start	Finish	Volume
Refuel	13.11.2007 09:28:00	13.11.2007 09:48:00	155,5
Refuel	13.11.2007 16:25:00	13.11.2007 16:45:00	321,0
Refuel	14.11.2007 21:59:00	14.11.2007 22:15:00	99,8
Drain	16.11.2007 14:53:00	16.11.2007 15:03:00	10,2
Refuel	16.11.2007 15:21:00	16.11.2007 15:42:00	349,3
Refuel	18.11.2007 09:28:00	18.11.2007 09:54:00	446,5
Refuel	19.11.2007 16:43:01	19.11.2007 16:58:00	130,8
Refuel	21.11.2007 19:20:01	21.11.2007 20:41:59	270,3
Refuel	26.11.2007 19:22:01	26.11.2007 19:40:59	396,1
Refuel	28.11.2007 11:59:00	28.11.2007 12:16:00	303,0
Refuel	29.11.2007 18:10:00	29.11.2007 18:18:00	103,2
Refuel	30.11.2007 09:24:00	30.11.2007 09:47:00	338,0

FUEL CONSUMPTION CHART

