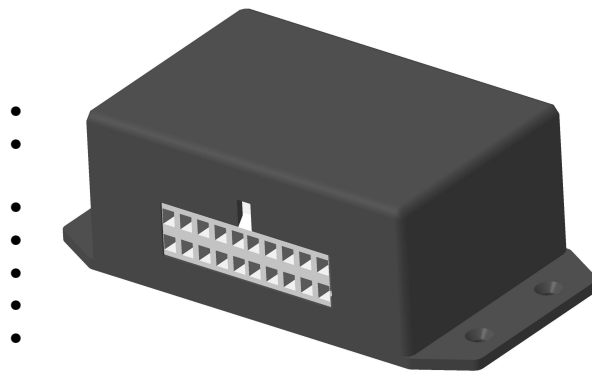


DALCON
Level Data Processor
Model N03 (20070)

Technical data

1. Introduction.

The DALCON level data processor (hereafter the device) is designed for calculating the current volume of fuel or other fluid in one to two tanks (three or more tanks if connect by cascading scheme), and to link the logger, ECU or other external device interface. The device also controls external status indicators (fluid level gauge and warning indicator).



3. Specification.

- | | |
|-------------------------------------|-------------------|
| • Supply voltage, DC (V) | 10...50; |
| • Supply current (mA) | no more than 30; |
| • Signal 1 analog output: | |
| ○ output resistance (Ohm) | no more than 100 |
| ○ minimum voltage (mV) | no more than 30 |
| ○ maximum voltage (V) | no less than 4,97 |
| • Signal 2 analog output: | |
| ○ output resistance (Ohm) | no more than 600 |
| ○ output voltage (V) | 0.5 of Signal 1 |
| • Level gauge control output: | |
| ○ output type | «open drain» |
| ○ signal type | PWM |
| ○ maximum switching voltage (V) | 50 |
| ○ maximum load current (A) | 0,5 |
| • Warning indicator control output: | |
| ○ output type | «open drain» |
| ○ maximum switching voltage (V) | 50 |
| ○ maximum load current (A) | 0,5 |

Design and specification are each subject to change without notice. Ask factory for the current technical specification before purchase and/or use.

Should a safety concern arise regarding this product, please be sure to contact us immediately.

- Operating temperature, °C 10...+ 50.

Mounting wiring set checklist

Wire color	Quantity (pieces)
White	3
Brown	2
Pink	3
Grey	3
Red (with Fuse)	1
Red (without Fuse)	1
Yellow	1
Green	1
Blue	1
Black	1
TOTAL:	17

4. Dalcon MF-20F plug general view and pinout

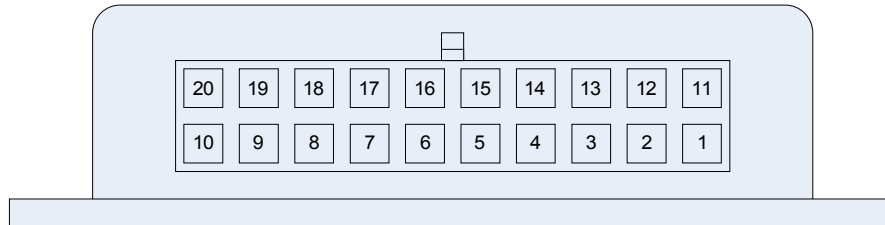


Figure 1. Dalcon general view and MF-20F pins location.

Appendix

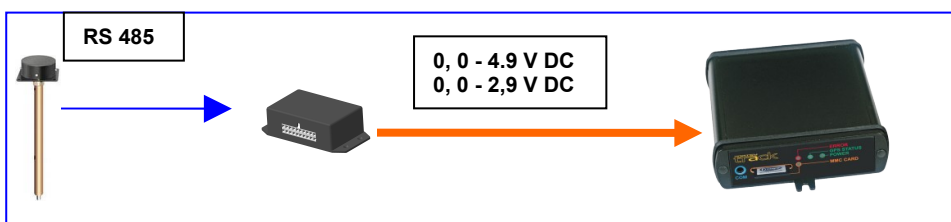
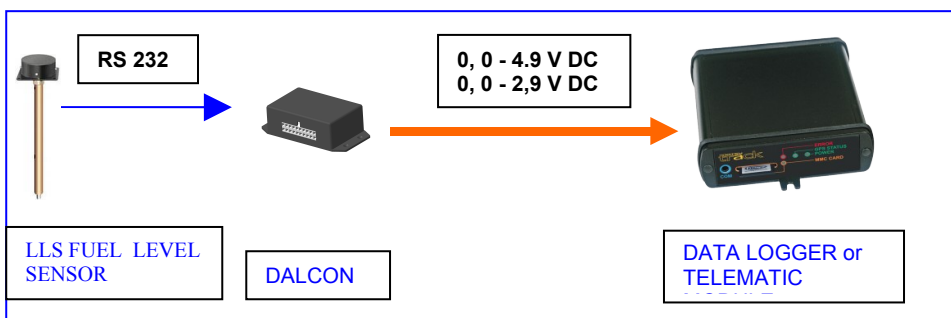
Table 1. Dalcon pinout description and corresponding wires color

Pin number	Pin description	Corresponding wire color
1	Level gauge control output	Yellow
2	«+» Board voltage for level gauge control output	Red (without Fuse)
3	Common («Ground»)	Black

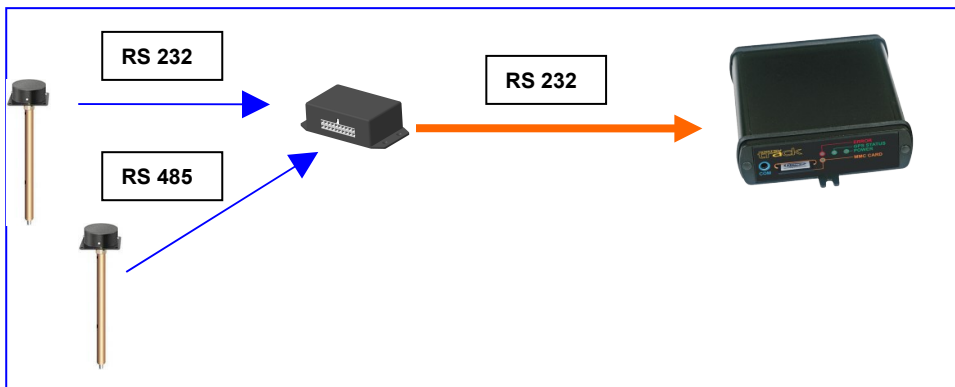
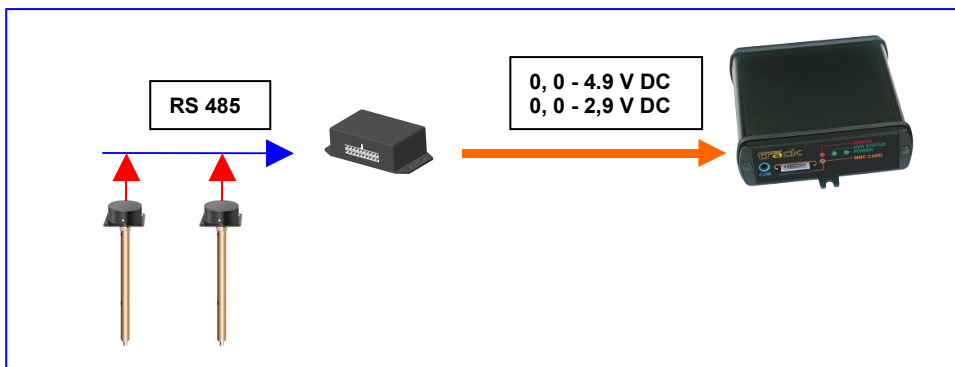
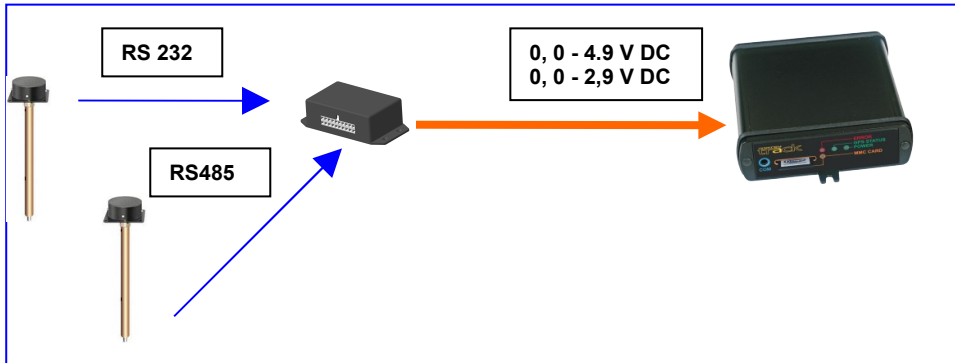
Design and specification are each subject to change without notice. Ask factory for the current technical specification before purchase and/or use.
Should a safety concern arise regarding this product, please be sure to contact us immediately.

4	«+» Power supply (10 – 50V DC)	Red (with Fuse)
5	Signal RX1 (RS-232)	Pink
6	Signal RX0 (RX-232)	Pink
7	«+» Regulated voltage LLS power supply	Brown
8	Signal «Line B» (RS-485)	Pink
9	«+» Regulated voltage LLS power supply	Brown
10	Signal «Line B» (RS-485)	Pink
11	Fuel reserve volume in tank indicator control output	Blue
12	Analog «Signal 2» (0 – 2.5V)	Green
13	Analog «Signal 1» (0 – 5.0V)	Green
14	Common («Ground»)	White
15	Signal TX1 (RX-232)	Grey
16	Signal TX0 (RX-232)	Grey
17	Common («Ground»)	White
18	Signal «Line A» (RS-485)	Grey
19	Common («Ground»)	White
20	Signal «Line A» (RS-485)	Grey

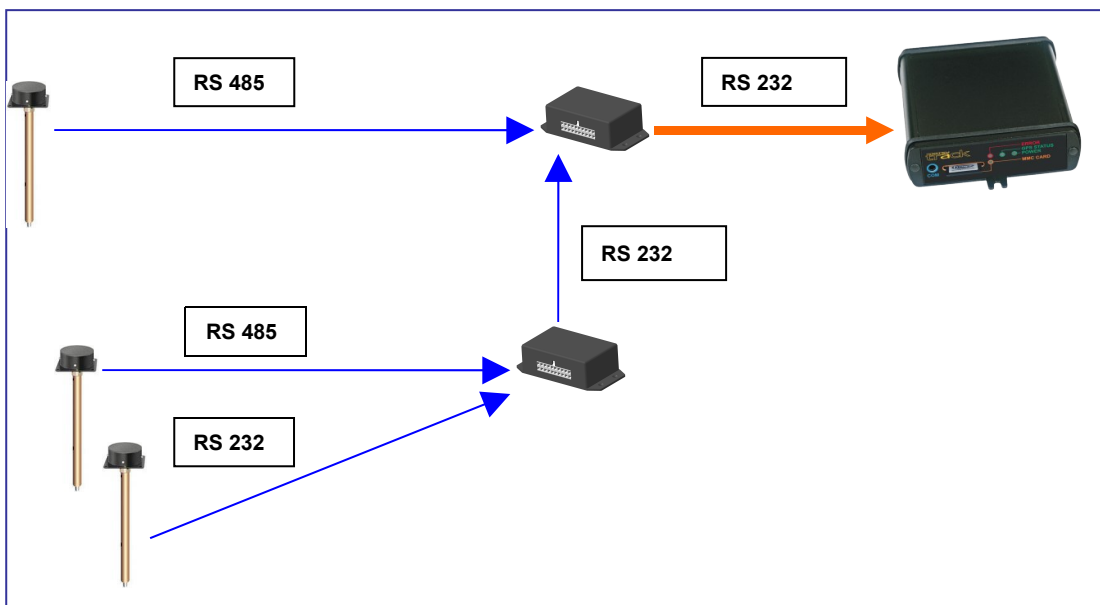
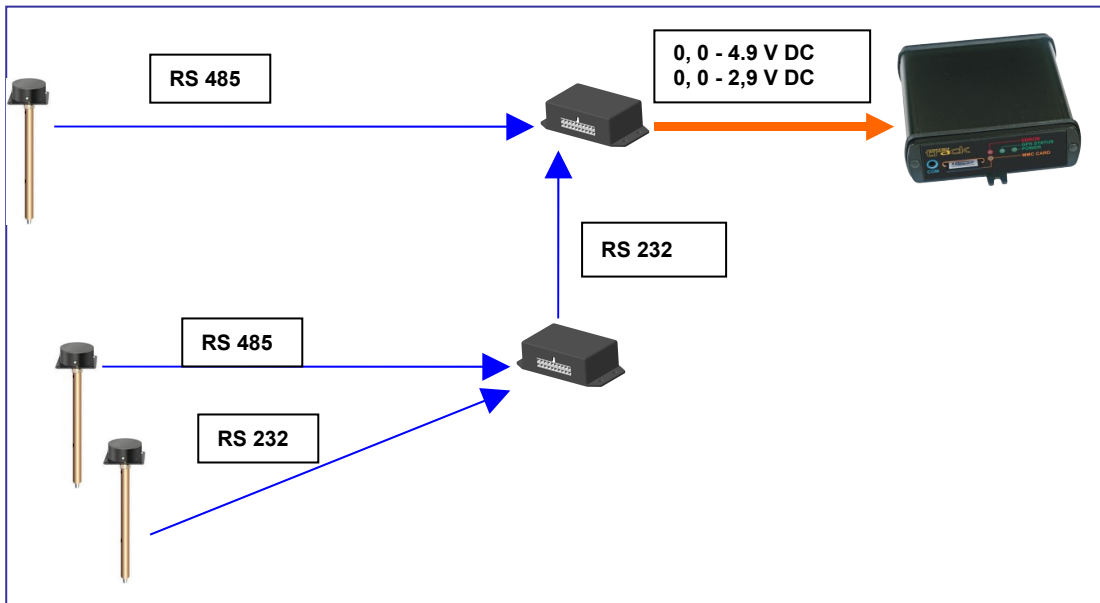
5. Typical applications



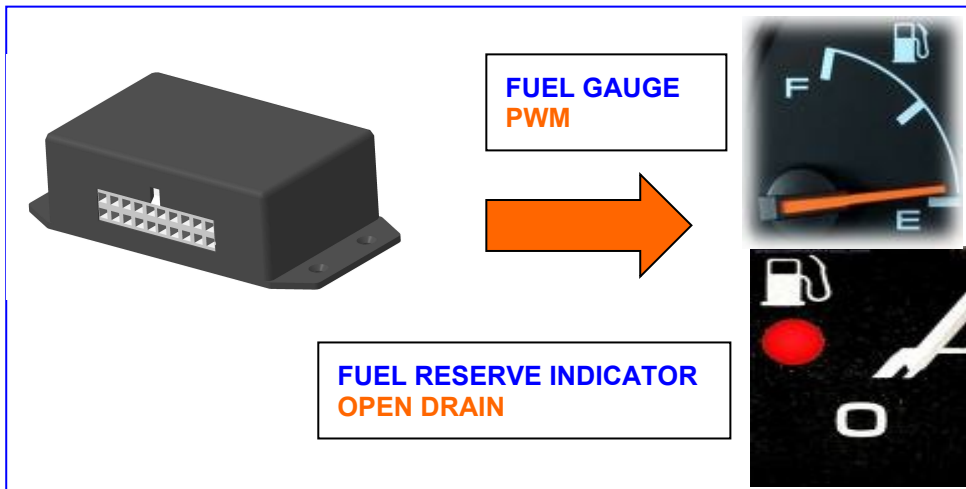
Design and specification are each subject to change without notice. Ask factory for the current technical specification before purchase and/or use.
Should a safety concern arise regarding this product, please be sure to contact us immediately.



Design and specification are each subject to change without notice. Ask factory for the current technical specification before purchase and/or use.
Should a safety concern arise regarding this product, please be sure to contact us immediately.



Design and specification are each subject to change without notice. Ask factory for the current technical specification before purchase and/or use.
Should a safety concern arise regarding this product, please be sure to contact us immediately.



All rights reserved. © 2008 VEPAMON OU

Design and specification are each subject to change without notice. Ask factory for the current technical specification before purchase and/or use.
Should a safety concern arise regarding this product, please be sure to contact us immediately.